



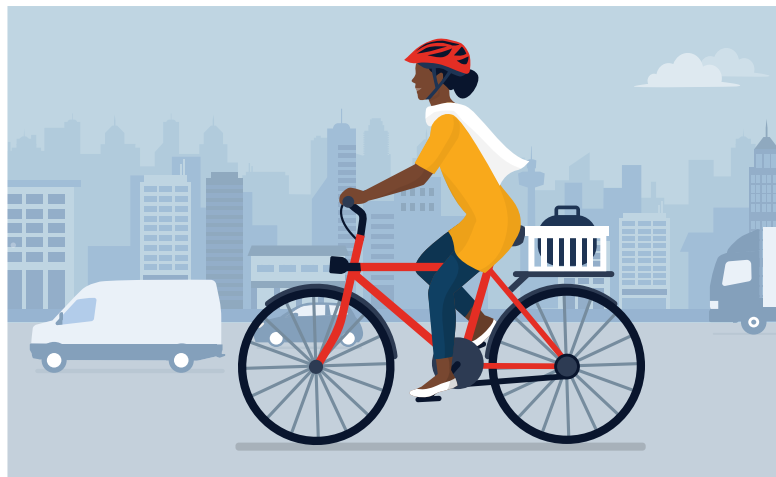
cycle scheme programme

PREFER TO CYCLE TO WORK INSTEAD OF COMMUTING BY CAR, BUS OR TUBE?

Good news – as an employee of Fisher Investments UK, you are eligible to participate in our CycleScheme! You can receive a loan of up to £1,000, increasing to a maximum of £3,000 after 6 months tenure!* Fisher will pay for the cost of the bike and equipment upfront and you'll make repayments through deductions over 12 months from your gross pay – this means savings on tax and NI.

How to get started:

1. Get a written quote for your bike and safety equipment from one of over 2,000 of CycleScheme's online and in-store participating [retailers](#).
2. Register the quote [online](#) to apply for a certificate.



3. Once your certificate has been issued, take it to the shop to pick up your new bike!

Check out the CycleScheme website for more details or contact [~Benefits Services](#)



**Don't worry we'll send you a reminder once you've been here for 6 months. The initial Cycle Scheme loans may be up to £3,000 total in a 12 month period.*